

# Independent Living



## Chambersburg

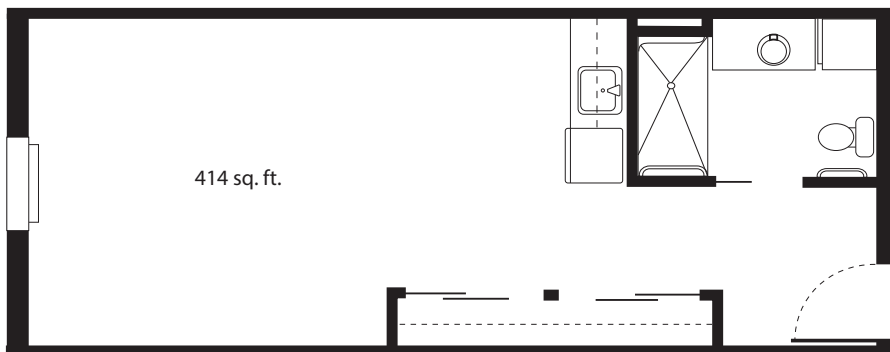
### Services and Amenities Included:

- Emergency Call System with Pendant
- Licensed Nurse on Premises 24/7
- Transportation to Medical Appointments
- Daily Activities & Fitness Programs
- Off-site Trips & Outings
- Three Daily Meals Prepared by Our Chef
- Coffee, Snacks & Beverage Bar
- Laundry, salon & chapel available to residents
- Weekly Housekeeping
- Standard Room Furnishings
- Wireless Internet Access
- All utilities except telephone & cable (\$25 each)
- Assistance with medications available (cost associated)

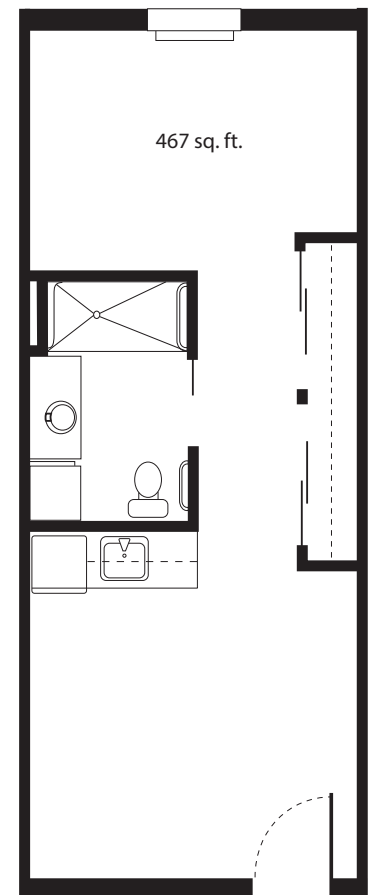
\* 10% discount on shared rate for married couples.

\*\* One-time Community fee of \$1,500 (single) or \$2,000 (couple)

### Studio



### Double Studio Deluxe



# Independent Living



## 2 Bedroom

*approx. 895 sq. ft.*



## 1 Bedroom

*approx. 640 sq. ft.*



## Chambersburg

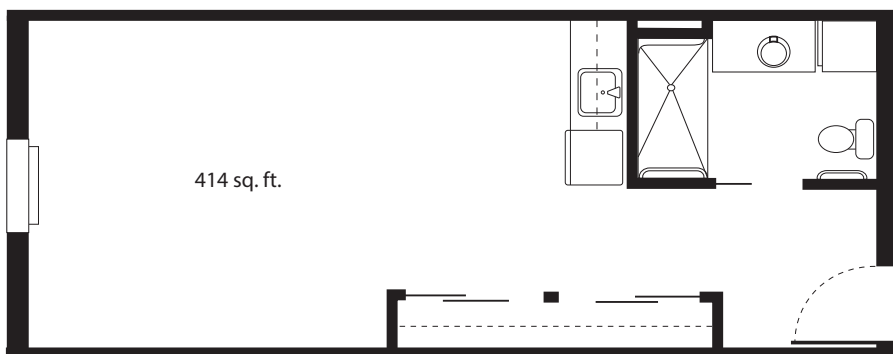
### Services and Amenities Included:

- Individualized Resident Support Plan
- Assistance with Managing Medications
- Assistance with Personal Hygiene and other Activities of Daily Living
- Coordination and Scheduling of Medical Appointments
- Emergency Call System with Pendant
- Licensed Nurse on Premises 24/7
- Transportation to Medical Appointments
- Daily Activities & Fitness Programs
- Off-site Trips & Outings
- Three Daily Meals Prepared by Our Chef
- Coffee, Snacks & Beverage Bar
- Laundry, salon & chapel available to residents
- Laundry service provided
- Weekly Housekeeping
- Standard Room Furnishings
- Wireless Internet Access
- All utilities except telephone & cable (\$25 each)

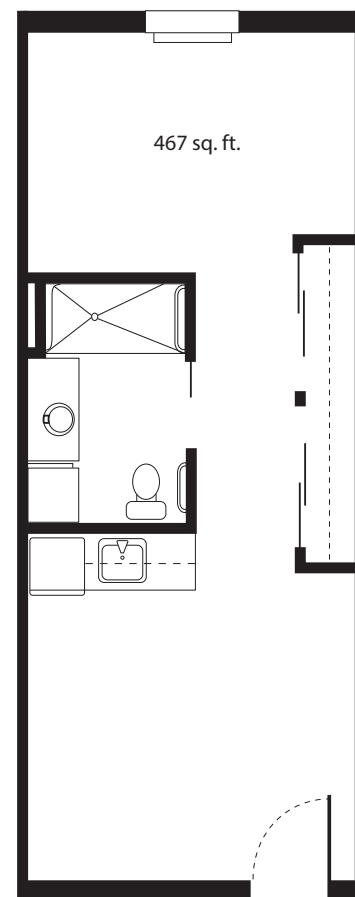
\* 10% discount on shared rate for married couples.

\*\* One-time Community fee of \$1,500 (single) or \$2,000 (couple)

### Studio



### Double Studio Deluxe





## 2 Bedroom

*approx. 895 sq. ft.*



## 1 Bedroom

*approx. 640 sq. ft.*





## Chambersburg

### Services and Amenities Included:

- Individualized Resident Support Plan
- Therapeutic Memory Care Programming
- Dementia-Certified Caregivers
- Assistance with Managing Medications
- Cueing and Assistance with Personal Hygiene and other Activities of Daily Living
- Coordination and Scheduling of Medical Appointments
- Licensed Nurse on Premises 24/7
- Transportation to Medical Appointments
- Off-site Trips & Outings
- Three Daily Meals Prepared by Our Chef
- Coffee, Snacks & Beverage Bar
- Access to a Secured Courtyard with Walkway
- Routine Safety Checks
- Standard Room Furnishings
- Laundry, salon & chapel available to residents
- Personal Laundry Service provided
- Housekeeping Services
- All utilities except telephone & cable (\$25 each)

\* 10% discount on shared rate for married couples.

\*\* One-time Community fee of \$1,500 (single) or \$2,000 (couple)

## Connections

MEMORY SUPPORT SERVICES

### Double Studio Deluxe

