



## Lancaster Service Package Includes:

- Monthly rental of your choice of apartment
- All utilities except telephone (\$26)
- Three daily meals prepared by Our Chef
- Coffee, snacks & beverage bar daily
- Standard room furnishings
- Weekly apartment cleaning and linen exchange
- Personal Laundry Service
- Laundry, salon & pub available to residents
- Emergency call pendant available (\$15)
- Transportation to local medical appointments
- Daily activities, social programs & outings
- Licensed Nurse available 24/7
- Wireless internet access

\* 10% discount on shared rate for married couples.

\*\* One-time Community fee of \$1,500 (single) or \$2,000 (couple)

### Service Level 1:

Service level 1 includes all of the amenities and services included in the standard service package plus **assistance with medication management**

### Service Level 2:

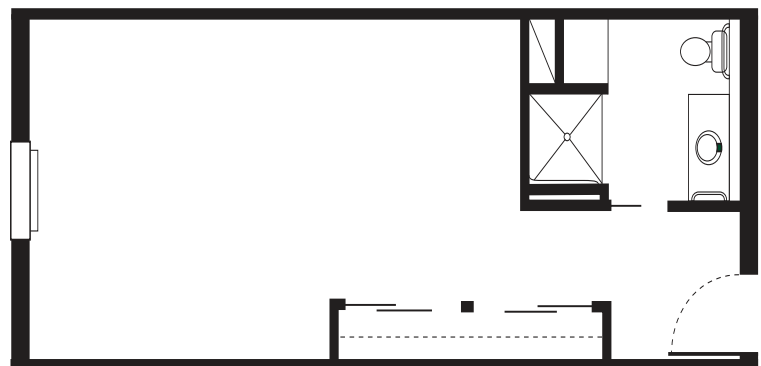
Service level 2 includes all of the amenities and services included in the standard service package and service level 1 plus **routine assistance from a resident life associate with activities of daily living**

### Service Level 3:

Service level 3 includes all of the amenities and services included in the standard service package and service level 1 plus **extensive assistance from resident life associates and/or oversight of a medical condition by a licensed nurse**

### Service Level 4:

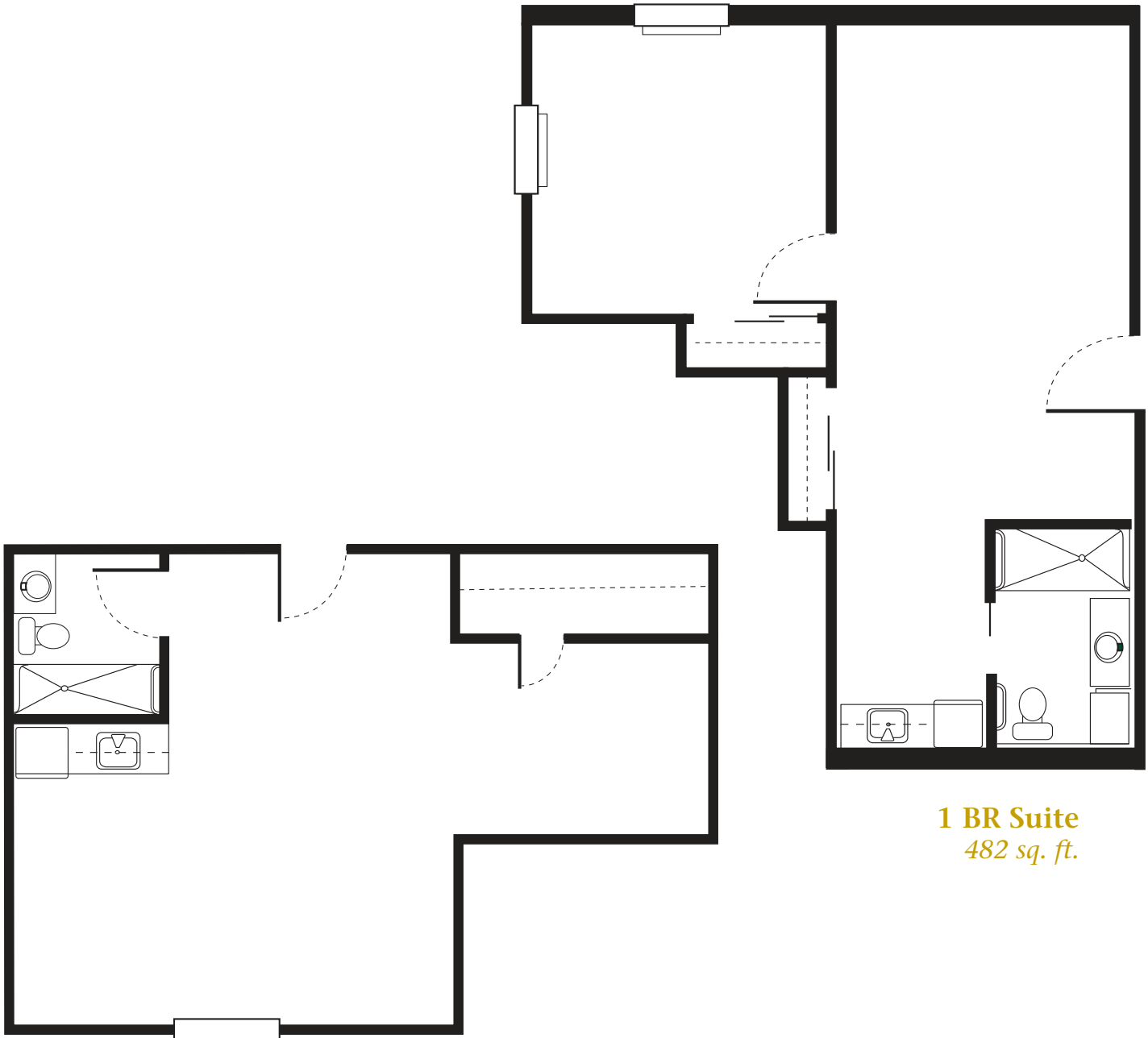
Service level 4 includes all of the amenities and services included in the standard service package and service level 1 plus **maximum assistance from resident life associates and/or oversight of a medical condition by a licensed nurse**



Studio

340 sq. ft.

# Floor Plan Options



**Studio Alcove**  
460 sq. ft.

**1 BR Suite**  
482 sq. ft.



## Lancaster Service Package Includes:

- Individualized Resident Support Plan
- Monthly rental of your choice of apartment
- All utilities except telephone (\$26)
- Three daily meals prepared by Our Chef
- Coffee, snacks & beverage bar daily
- Standard room furnishings available
- Weekly apartment cleaning and linen exchange
- Personal Laundry Service
- Laundry, salon & chapel available to residents
- Therapeutic Memory Care Programming
- Off-site Trips and Outings
- Dementia-Certified Caregivers
- Assistance with Managing Medications
- Cueing and Assistance with Personal Hygiene and other Activities of Daily Living
- Coordination and Scheduling of Medical Appointments
- Transportation to Medical Appointments
- Licensed Nurse Available 24/7
- Access to a Secured Courtyard with Walkway
- Routine Safety Checks
- Wireless internet access

\* 10% discount on shared rate for married couples.

\*\* One-time Community fee of \$1,500 (single) or \$2,000 (couple)

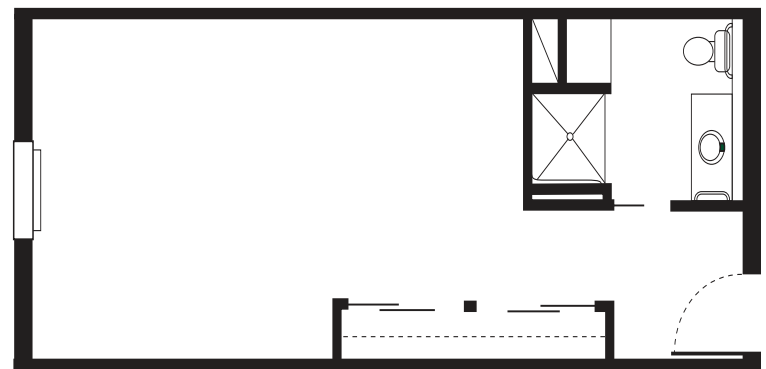


### Service Level 1:

Service level 1 includes all of the amenities and services included in the standard service package plus *extensive assistance from resident life associates with activities of daily living*

### Service Level 2:

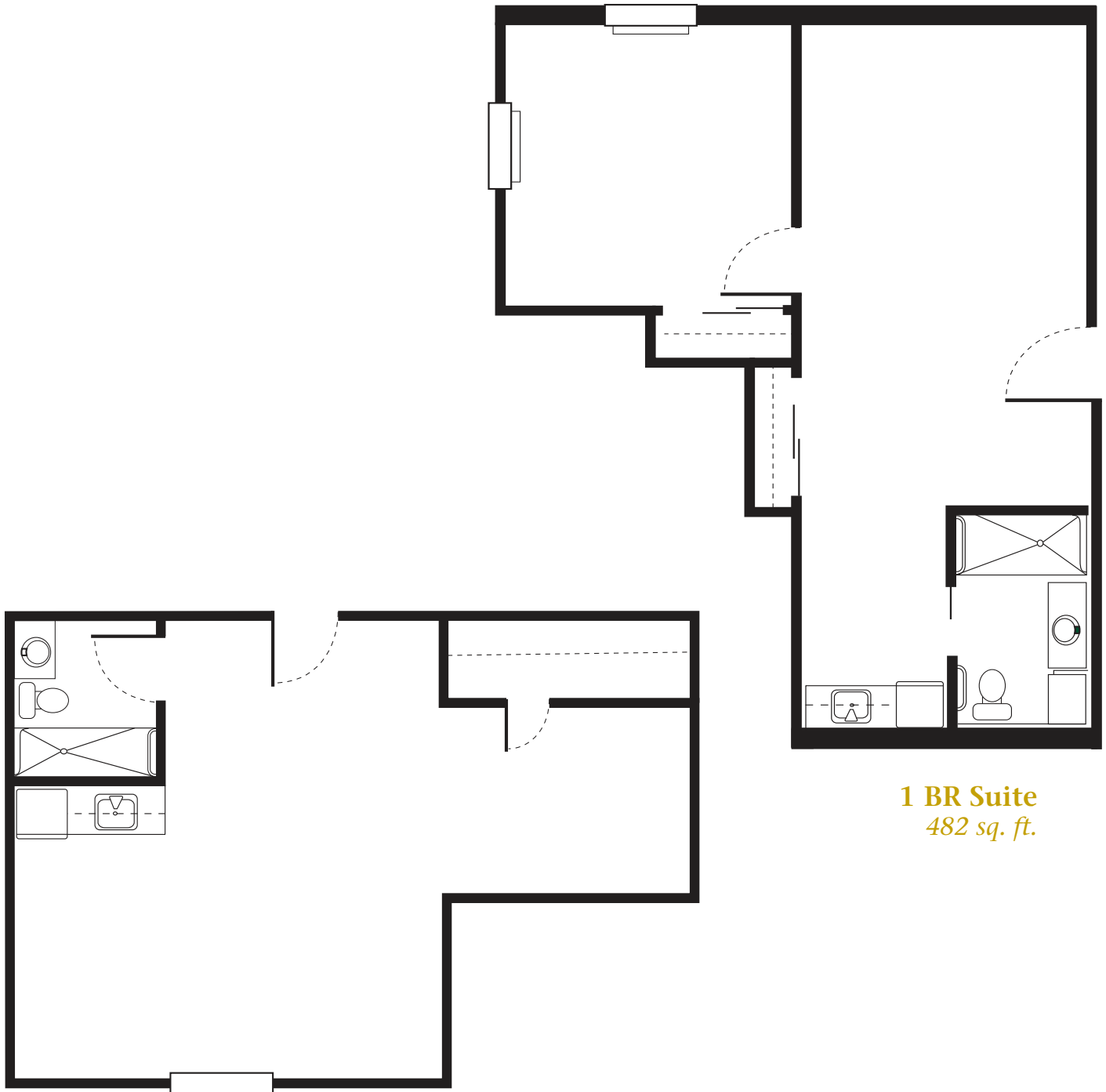
Service level 2 includes all of the amenities and services included in the standard service package plus *maximum assistance from resident life associates with activities of daily living*



Studio

340 sq. ft.

# Floor Plan Options



**Studio Alcove**  
460 sq. ft.

**1 BR Suite**  
482 sq. ft.